

RCF™ POLYURETHANE INJECTION EXPANDING FOAM KIT INSTRUCTIONS

Revision Date 06/16/2021

8383 Riley Street,
Zeeland, MI USA 49464
P: +1 888 684 3889
E: info@rhinocarbonfiber.com

01

WHAT COMES IN THE POLYURETHANE INJECTION EXPANDING FOAM KIT



KIT INCLUDES

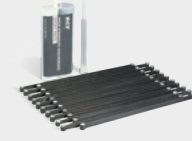
- (1) Tube of Polyurethane Injection Expanding Foam
- (1) Tube of High Strength Anchoring Epoxy Paste
- (2) Static epoxy mixing nozzles
- (10) Ports
- Gloves and Instructions

30 FOOT KITS HAVE 3 TIMES THE AMOUNT IN THAT KIT

PRODUCTS COMMONLY USED WITH CRACK REPAIR



Rhino Carbon Fiber™ Dual Epoxy Gun
300/300 ml or 300/150 ml gun



Rhino Carbon Fiber™ Concrete Crack Lock™ stitches
Adds extra strength during repair



RCF™ High Strength Anchoring Epoxy Paste
Used to fill cracks

RECOMMENDED POWER TOOLS

(TOOLS MAY VARY DEPENDING ON PROJECT)

5-Inch Surface Grinding Dust Shroud Kit



Use for grinding foundation wall
**USE DIAMOND TIP WHEEL

10-Gallon Dust Extractor



Collects dust while attached to grinder and shroud tools

Cutting and Tuck Pointing Dust Shroud Tool



Use to tuckpoint the wall
**USE DIAMOND EDGE BLADE

Hammer Drill



Use for concrete removal
**USE CHISEL OR SPADE TIP ATTACHMENT

YOU WILL ALSO NEED...

- Safety Goggles
- Respirator Mask
- Hard Hat
- Coveralls
- Drop Cloth/ Plastic
- Marker
- Hammer
- Epoxy Gun
- Wire Brush

SAFETY WARNINGS

Please read and follow safety procedures for all tools and wear proper safety equipment during installation.

While using power tools, follow all EPA/OSHA guidelines for lead paint removal and respiratory protection. For more information visit www.epa.gov or www.osha.gov.



1-888-684-3889 | www.RhinoCarbonFiber.com



© All Rights Reserved

None of the authors, contributors, administrators, or anyone else connected with Rhino Products USA Inc. or any of its affiliates (collectively, "Rhino"), in any way whatsoever, can be responsible for your use of the information, instructions or advice contained in or linked from this or any related document. All liability with respect to actions taken or not taken based on the contents of this or any related document is hereby expressly disclaimed by Rhino. The content of this document is provided "as is;" no representations are made that the content is error-free.

PLEASE READ ALL DIRECTIONS CAREFULLY & WEAR SAFETY GOGGLES BEFORE INSTALLING



01 PREP

- Examine the crack that is being repaired
- Mark any areas where the crack is not continuous
- Lay plastic, drop cloth or cardboard down on floor
- Clean the crack and immediate surrounding areas with a wire brush

Tools: Marker, Wire Brush, Plastic



02 PORT LOCATIONS

CONTINUOUS CRACKS:

- Mark port locations at approximately every 18" starting from the bottom of the crack

DISCONTINUOUS CRACKS:

- Mark port locations just above any discontinuous point in the crack
- Space the remaining ports every 18" from the discontinuous locations

Note: Additional ports may be required for cracks with multiple discontinuous locations

Tools: Marker and measuring tape



03 PORT INSTALLATION

- Detach cap from the side of the port and set aside
- Dispense a small amount of High Strength Anchoring Epoxy Paste onto a disposable work surface such as cardboard or painters tray
- Roll the entire flat edge of the port in the High Strength Anchoring Epoxy Paste
- Make sure the hole for the port is not plugged with epoxy
- Pressing firmly, place the port directly over the crack at the previously marked locations

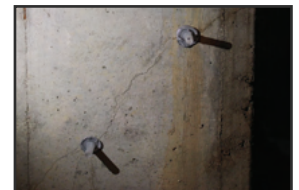
Tools: Gloves, disposable work surface, ports



01: Roll port edge in High Strength Anchoring Epoxy Paste



02: Press port firmly directly over crack



03: Cover over previously marked locations



04 COVERING THE CRACK

- Dispense approximately 1/3 of the tube of the High Strength Anchoring Epoxy Paste onto the disposable work surface (like card board). Add more as needed.
- Apply the High Strength Anchoring Epoxy Paste over the entire crack
- Feather the epoxy approximately out 2" or more out on both sides of the crack
- At port locations, apply the epoxy around the entire port until the port base is no longer visible

Tools: Gloves, disposable work surface, spatula



05 INJECTION

- Once the High Strength Anchoring Epoxy Paste (used to seal the crack and set the ports) has fully cured, the crack is ready to inject
TIP: If your thumb nail can dent the epoxy, it is NOT fully cured
- Place the Polyurethane Injection Expanding Foam, with the static mixing nozzle into the epoxy gun
- Starting at the bottom port, push the static mixing nozzle into the port until you feel a click
- Dispense poly until you see it coming out of the port located directly above
- Remove the nozzle from the port and install the cap
- Move to the next port and repeat the process until you have worked all the way up the wall

Tools: Gloves, port caps

06 CLEAN UP (optional)

- Once the Polyurethane Injection Expanding Foam has cured remove the ports from the wall using a hammer
- Patch port locations with High Strength Anchoring Epoxy Paste

Tools: Hammer