

# RCF™ STRUCTURAL EPOXY INJECTION RESIN KIT INSTRUCTIONS

Revision Date 06/16/2021

8383 Riley Street,  
Zeeland, MI USA 49464  
P: +1 888 684 3889  
E: info@rhinocarbonfiber.com

01

## WHAT COMES IN THE STRUCTURAL EPOXY INJECTION RESIN KIT



### KIT INCLUDES

- (1) Tube of Structural Epoxy Injection Resin
- (1) Tube of High Strength Anchoring Epoxy Paste
- (2) Static epoxy mixing nozzles
- Gloves and Instructions
- (10) Ports

30 FOOT KITS HAVE 3 TIMES THE AMOUNT IN THAT KIT

### PRODUCTS COMMONLY USED WITH CRACK REPAIR



Rhino Carbon Fiber™ Dual Epoxy Gun  
300/300 ml or 300/150 ml gun



Rhino Carbon Fiber™ Concrete Crack Lock™ stitches  
Adds extra strength during repair



RCF™ High Strength Anchoring Epoxy Paste  
Used to fill cracks

## RECOMMENDED POWER TOOLS

(TOOLS MAY VARY DEPENDING ON PROJECT)

### 5-Inch Surface Grinding Dust Shroud Kit



Use for grinding foundation wall  
\*\*USE DIAMOND TIP WHEEL

### 10-Gallon Dust Extractor



Collects dust while attached to grinder and shroud tools

### Tuck Point Grinder with Dust Shroud Attachment



Use to tuckpoint the wall  
\*\*USE DIAMOND EDGE BLADE

### Hammer Drill



Use for concrete removal  
\*\*USE CHISEL OR SPADE TIP ATTACHMENT

## YOU WILL ALSO NEED...

- Safety Goggles
- Respirator Mask
- Hard Hat
- Coveralls
- Drop Cloth/ Plastic
- Marker
- Hammer
- Epoxy Gun
- Wire Brush

## SAFETY WARNINGS

Please read and follow safety procedures for all tools and wear proper safety equipment during installation.

While using power tools, follow all EPA/OSHA guidelines for lead paint removal and respiratory protection. For more information visit [www.epa.gov](http://www.epa.gov) or [www.osha.gov](http://www.osha.gov).



1-888-684-3889 | [www.RhinoCarbonFiber.com](http://www.RhinoCarbonFiber.com)



© All Rights Reserved

None of the authors, contributors, administrators, or anyone else connected with Rhino Products USA Inc. or any of its affiliates (collectively, "Rhino"), in any way whatsoever, can be responsible for your use of the information, instructions or advice contained in or linked from this or any related document. All liability with respect to actions taken or not taken based on the contents of this or any related document is hereby expressly disclaimed by Rhino. The content of this document is provided "as is;" no representations are made that the content is error-free.

PLEASE READ ALL DIRECTIONS CAREFULLY & WEAR SAFETY GOGGLES BEFORE INSTALLING



## 01 PREP

- Examine the crack that is being repaired
- Mark any areas that the crack is not continuous
- Lay plastic, drop cloth or cardboard down on floor
- Clean the crack and immediate surrounding areas with a wire brush

Tools: Marker, wire brush, plastic, drop cloth or cardboard



## 02 PORT LOCATIONS

### CONTINUOUS CRACKS:

- Mark port locations approximately every 18" starting from the bottom of the crack

### DISCONTINUOUS CRACKS:

- Mark port locations just above any discontinuous point in the crack
- Space the remaining ports every 18" from the discontinuous locations

Note: Additional ports may be required for cracks with multiple discontinuous locations

Tools: marker and measuring tape



## 03 PORT INSTALLATION

- Detach port cap from the side of the port and set aside
- Dispense a small amount of Rhino High Strength Epoxy Paste onto a disposable work surface such as cardboard or painters tray
- Roll the entire flat edge of the port in the Rhino High Strength Epoxy Paste
- Make sure the hole for the port is not plugged with epoxy
- Pressing firmly place the port directly over the crack at previously marked locations

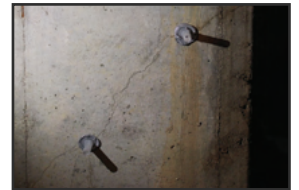
Tools: gloves, disposable work surface, ports



01: Roll port edge in High Strength Anchoring Epoxy Paste



02: Press port firmly directly over crack



03: Cover over previously marked locations

# RCF™ STRUCTURAL EPOXY INJECTION RESIN KIT INSTRUCTIONS

Revision Date 06/16/2021

8383 Riley Street,  
Zeeland, MI USA 49464  
P: +1 888 684 3889  
E: info@rhinocarbonfiber.com

03



## 04 COVERING THE CRACK

- Dispense approximately 1/3 of the tube of the High Strength Anchoring Epoxy Paste onto the disposable work surface (like card board). Add more as needed.
- Apply the High Strength Anchoring Epoxy Paste over the entire crack
- Feather the epoxy approximately 2", or more, on both sides of the crack
- At port locations, apply the epoxy around the entire port until the port base is no longer visible

Tools: Gloves, disposable work surface, spatula



## 05 INJECTION

- On the epoxy gun, swap the black plastic pull tab, located on the back of the epoxy gun with one of the plastic pushers (Reference epoxy gun instruction manual)
- Place the Structural Epoxy Injection Resin with the static mixing nozzle into the epoxy gun
- Starting at the bottom port, push the static mixer into the port until you feel a click
- Dispense resin until you see the resin coming out of the port located directly above
- Remove the epoxy gun and push the cap into the port
- Move to the next port and repeat the process until you have worked all the way up the wall

Tools: Gloves, port caps

## 06 CLEAN UP (optional)

- Once the epoxy and resin have cured, remove the ports from the wall using a hammer

Tools: Hammer



1-888-684-3889 | [www.RhinoCarbonFiber.com](http://www.RhinoCarbonFiber.com)

© All Rights Reserved

None of the authors, contributors, administrators, or anyone else connected with Rhino Products USA Inc. or any of its affiliates (collectively, "Rhino"), in any way whatsoever, can be responsible for your use of the information, instructions or advice contained in or linked from this or any related document. All liability with respect to actions taken or not taken based on the contents of this or any related document is hereby expressly disclaimed by Rhino. The content of this document is provided "as is;" no representations are made that the content is error-free.